

Search Parameters

Search Name: Emergency Response (Primary Area) Licensed Agencies Only

Search Description: This criteria shows data for licensed agencies only responding to Emergency Responses in their primary area. All first response agencies have been removed.

Data Providers:

First 50 of 191 selected providers: Larned EMS (closed); Haven Community EMS; Ford County Fire & EMS; Cherokee County Amb District 3 (closed); Plainville EMS; Comanche County Ambulance Service; Johnson County Med Act; Halstead Fire/EMS; Scott County EMS; Smith County EMS; Hamilton County EMS; LifeSave (Ground); Cheyenne County Ambulance; Washington EMS; Kiowa County EMS; Leavenworth County EMS; Pottawatomie County EMS; Doniphan County Rural Fire Dist 2; Salina Fire Department; Grant County EMS; Jefferson County Ambulance Service; Harper County EMS; Rush County EMS; Hoisington Ambulance Service; Morton County EMS; Northwest Kansas Ambulance Service; Minneapolis Ambulance Service; American Medical Response Kansas; Mitchell County EMS; Waterville Ambulance Service; Meade County EMS; Woodson County Ambulance Service; Healthstar One-Med Trans Corp.; Atchison County EMS - Techs; Osborne County EMS; Clark County Ambulance; Critical Care Transfer; Doniphan County EMS; Gray County EMS; Caney Ambulance Service; Neodesha Ambulance Service; Riley County EMS; Guardian Flight DBA AirLink; Edwards County Ambulance; City of Edwardsville Ambulance; North Ness County EMS; Tri City LifeNet; Mt. Hope EMS Inc.; Ellsworth County EMS; Reno County EMS; Norton County EMS

Date Field: Event Local Date

Date Range: Year To Date (01/01/2023 to 12/31/2023)

Date Bin: Partial Month

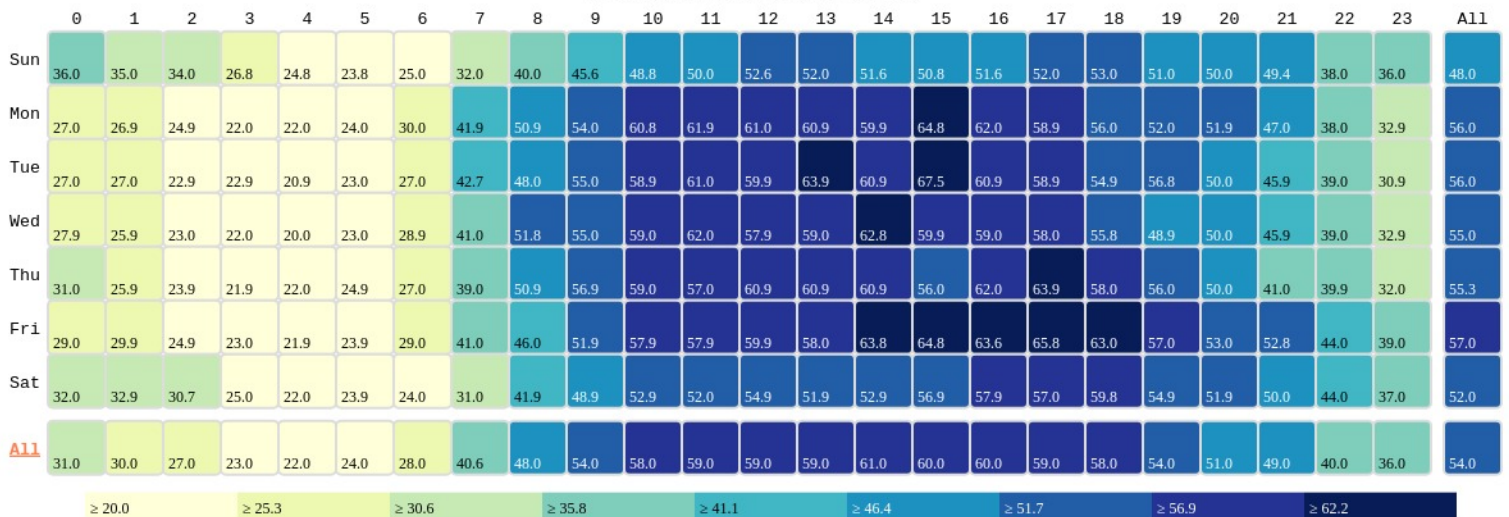
States: Kansas

Types of Service Requested: Emergency Response (Primary Response Area)

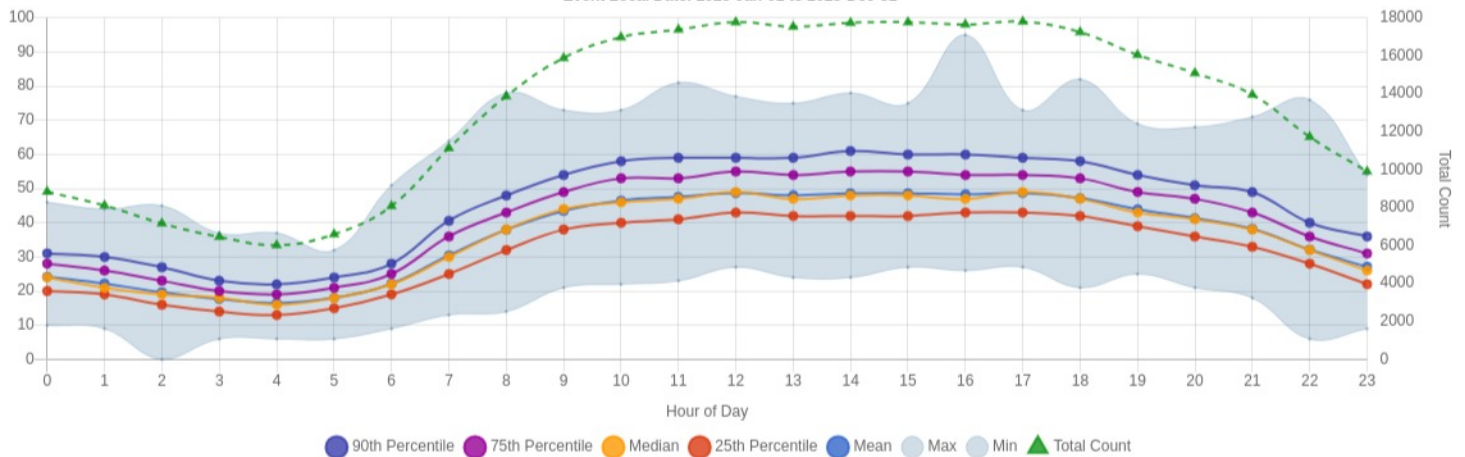
Demand Analysis

Data filtered based on Access Levels: Operational = Full.

Demand Analysis Heat Map (90th Percentile)
Event Local Date: 2023-Jan-01 to 2023-Dec-31

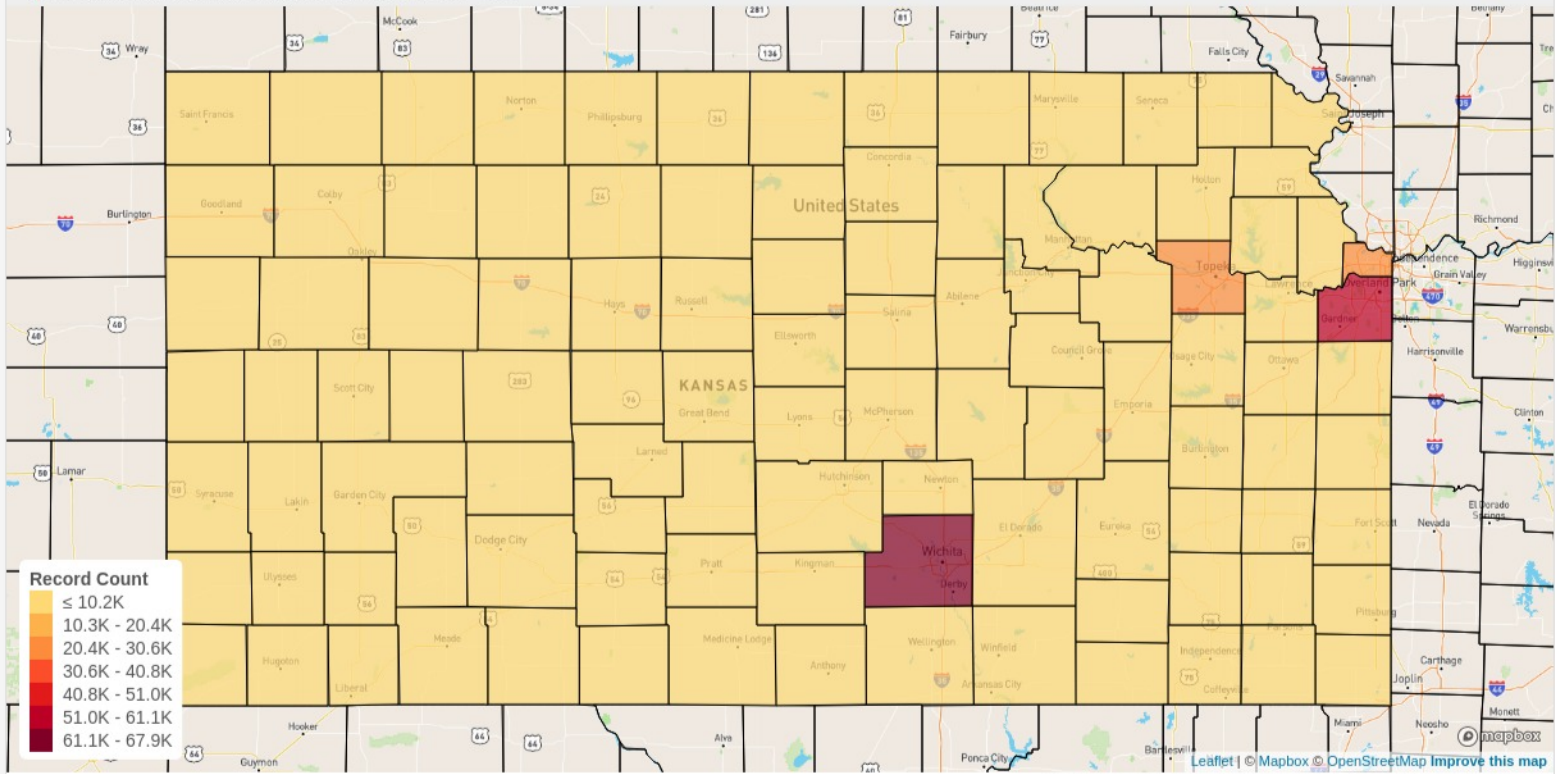


Demand Analysis Details (All Days)
Event Local Date: 2023-Jan-01 to 2023-Dec-31

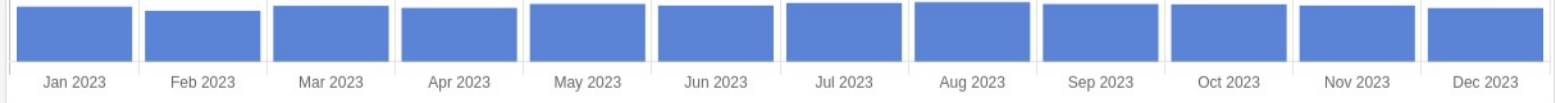


Transport Map

▼ Data filtered based on Access Levels: Operational = Full.



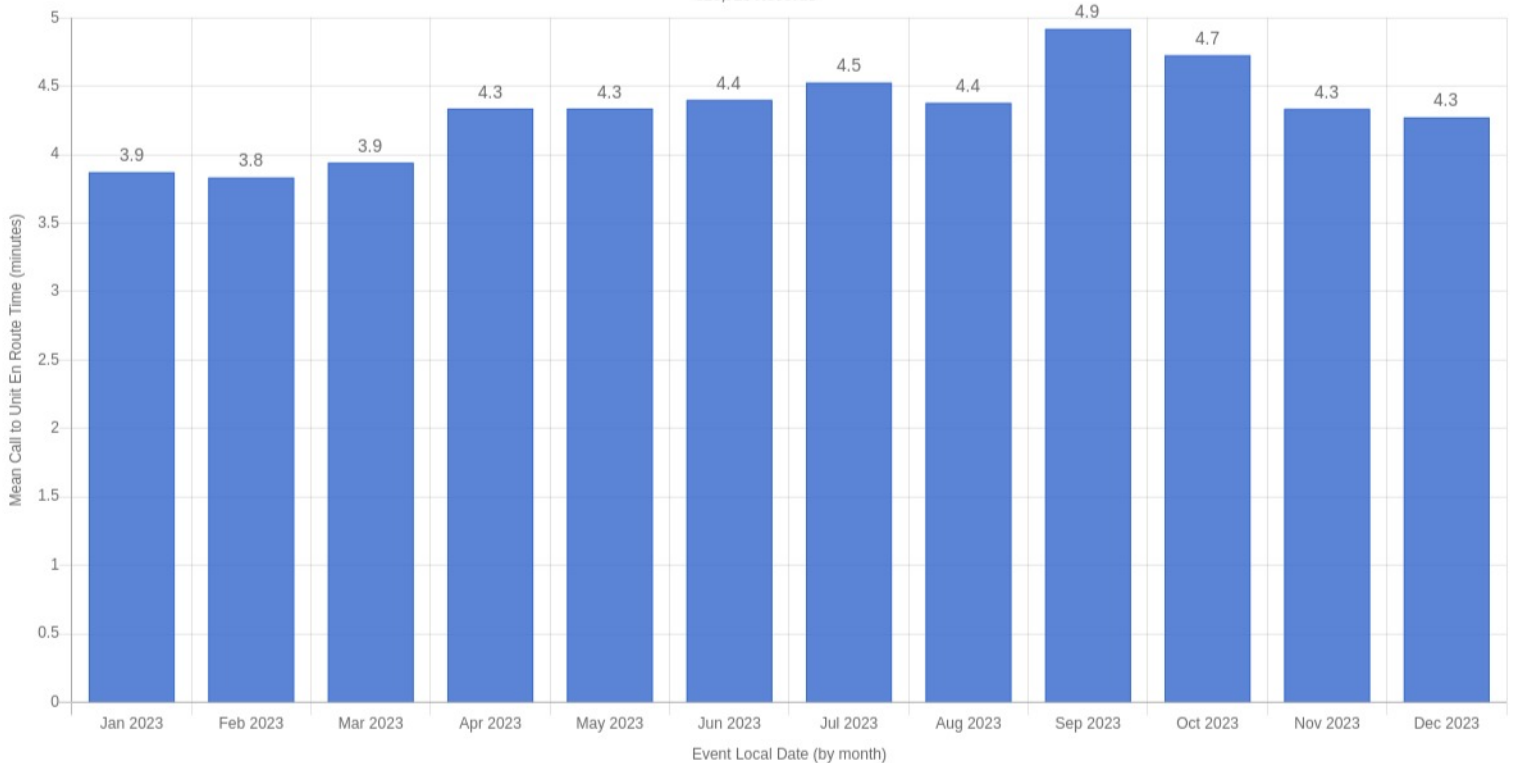
Event Local Date(s) Shown: 01/01/23 - 12/31/23, Binning: Month



Data Explorer: Mean Call to Unit En Route Time by Event Local Date

▼ Data filtered based on Access Levels: Operational = Full.

Mean Call to Unit En Route Time by Event Local Date
Event Local Date: 2023-Jan-01 to 2023-Dec-31
316,713 Records



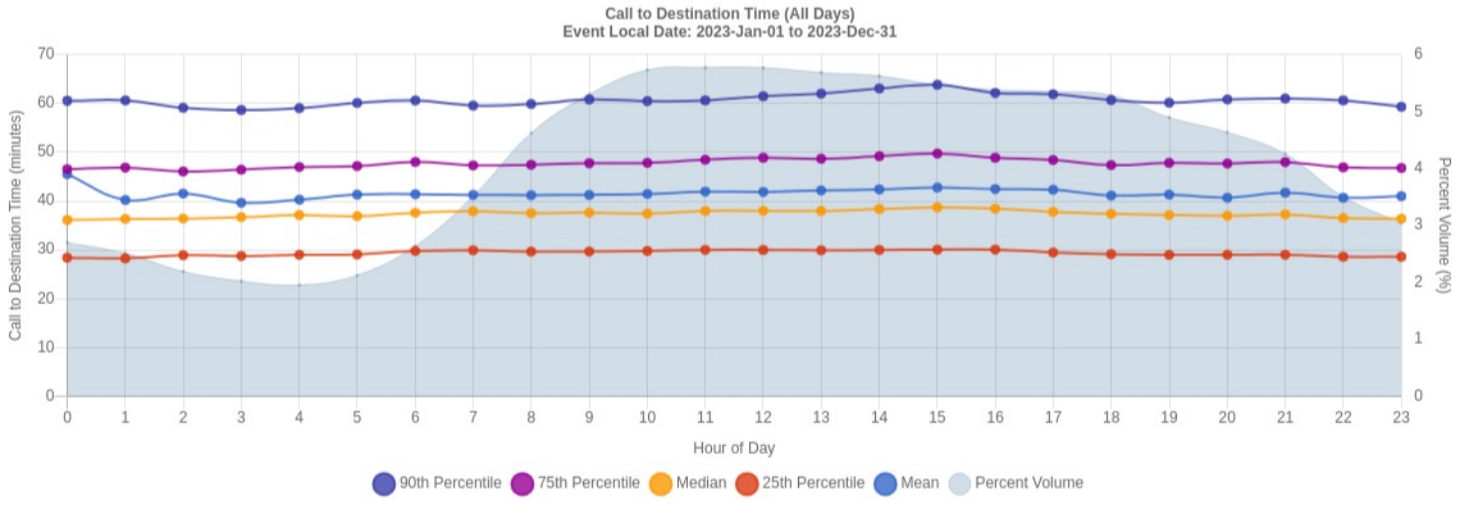
EMS Response Times

📌 Data filtered based on Access Levels: Operational = Full.

90th Percentile Call to Destination Time (minutes)
Event Local Date: 2023-Jan-01 to 2023-Dec-31

	0	1	2	3	4	5	6	7	8	9	10	11	12	13	14	15	16	17	18	19	20	21	22	23	All
Sun	61.7	62.4	59.2	58.3	57.3	59.4	59.8	58.5	57.0	59.5	59.1	59.9	62.0	60.6	60.9	63.0	60.8	58.8	61.0	59.3	59.6	60.9	57.6	59.3	60.0
Mon	62.9	58.3	58.0	54.8	60.3	57.2	61.0	58.3	60.5	59.8	58.4	59.6	60.0	61.9	61.8	65.2	62.0	60.5	60.8	60.8	60.0	62.4	59.6	57.5	60.7
Tue	62.3	59.4	57.4	59.4	60.3	59.2	62.5	61.9	59.4	59.1	60.0	59.2	62.0	63.2	62.4	61.8	63.4	62.3	60.7	60.3	63.0	59.6	59.3	60.8	61.1
Wed	58.0	61.9	60.1	57.7	58.6	61.4	59.9	61.1	60.3	62.3	58.4	61.0	60.0	62.5	63.0	62.1	62.2	61.6	61.2	57.1	61.4	59.1	61.1	57.4	60.8
Thu	56.7	60.7	60.9	60.7	59.6	61.0	60.9	61.6	59.8	61.3	61.1	61.5	61.5	60.7	65.2	62.8	60.4	61.2	58.6	61.3	59.2	62.2	61.1	60.0	61.1
Fr 1	63.7	61.0	59.9	57.2	59.9	62.0	59.0	58.3	60.5	62.2	61.5	61.7	61.8	62.8	64.5	67.1	64.5	64.6	61.8	63.8	61.8	61.8	61.3	61.4	62.0
Sat	60.2	59.3	57.7	62.0	56.7	59.0	61.9	56.0	60.8	60.3	64.4	62.0	63.1	61.0	62.2	63.6	60.9	63.9	60.7	59.6	60.2	60.6	62.2	59.1	61.2
All	60.5	60.6	59.1	58.6	59.0	60.1	60.6	59.6	59.9	60.8	60.5	60.6	61.5	62.0	63.1	63.8	62.2	61.9	60.7	60.1	60.8	61.0	60.6	59.3	61.0

 ≥ 54.8
 ≥ 56.1
 ≥ 57.5
 ≥ 58.9
 ≥ 60.3
 ≥ 61.6
 ≥ 63.0
 ≥ 64.4
 ≥ 65.8



Ambulance Patient Offload Times

▼ Data filtered based on Access Levels: Operational = Full.

